



TECUMSEH PRODUCTS INDIA PVT. LTD.

TECHNICAL SPECIFICATIONS

AWZ5535EXN
(208/230V - 1Ph - 60Hz)



AWZ5535EXN

208/230V-60Hz-1Ph

PERFORMANCE SPECIFICATION:

Model	AWZ5535EXN	
Bill of Material	4 LEG -STANDARD	AWZ5535EXN0001
	3 LEG - STANDARD	AWZ5535EXN0003
	4 LEG -SHORT	-
	3 LEG - SHORT	-
Application	Air conditioning & Heat pump	
Refrigerant	R – 22	
Electrical Rating	230/208 Volts, 60 Hz, Single Phase	
Capacity – (Btu / Hr)	35000	
(Kcal / Hr)	8816	
(Watts)	10257	
Input Power (Watts)	3500	
Input Current (Amps)	15.4	
Efficiency (Btu / W-Hr)	10.0	
(Kcal / W-Hr)	2.52	
(Watts / Watts)	2.93	

Note: Performance Tolerance - $\pm 5\%$

RATING CONDITIONS (ASHRAE-T)

Evaporator Temperature	45 °F	7.2 °C
Condensing Temperature	130 °F	54.4 °C
Return Gas Temperature	95 °F	35 °C
Liquid temperature	115 °F	46 °C
Ambient temperature	95 °F	35 °C



AWZ5535EXN

208/230V-60Hz-1Ph

MOTOR SPECIFICATION:

Motor Type	Permanent Split Capacitor
Nominal output (HP)	4.00
Nominal Voltage (Volts)	208 / 230
Voltage Range (Volts)	197-253
Frequency / Phase (Hz / \emptyset)	60 / 1
Number of poles	Two (2)
Nominal speed	3500
Locked rotor current (Amps)	92.0
Rated Load current (Amps)	15.4
Maximum Continuous current (Amps)	24.5
Motor Cooling	Suction Gas
Maximum winding Temperature °F/°C	265/130
Insulation Class (°C)	Class B (130°C)
Motor cu wire enameled class	POLYSTER IMIDE as Base Coat 180°C POLYAMIDE IMIDE as Top Coat 220°C
Winding Resistance	At 77 °F (25 °C)
Main Winding (Ohm)	0.6
Start Winding (Ohm)	2.4
Motor Protector Part Number	15HM 2319-148
Motor Protector Type	Internal
Opening Temperature (°C)	110
Closing Temperature (°C)	69
Ultimate Trip Current at 71 °C Min (EPA)	34.9
First Cycle Trip Current (EPA 25°C)	
2-10 Seconds Main (A)	79



AWZ5535EXN

208/230V-60Hz-1Ph

APPLICATION SPECIFICATION

Discharge Pressure Range (PSI)	143.6 – 464.0
(KG/CM ²)	10.1 - 32.63
Suction Pressure Range (PSI)	13.2 – 92.6
(KG/CM ²)	0.9 - 6.5
Discharge Pressure Range (PSI)	580 at 230 Volts
Block Fan Test (KG/CM ²)	40.78
Compression Ratio (Max)	7.3
Discharge Temperature (°F)	290
(°C)	143
Bottom Shell Temperature (°F)	$\geq E_T + 35$
(°C)	$\geq E_T + 19.4$
Outdoor / Indoor Conditions (°F)	67.0 DBT / 57.0 WBT
(°C)	19.4 DBT / 13.9 WBT
Superheat (°F)	19.4
(°C)	10.8
Inclination	$\leq 5^\circ$
Maximum Ambient (°C)	54
At Start Voltage of 198 V	

PROCESS SPECIFICATION

Moisture Limit (mg)	75 (After Dehydration)
Residue Limit (mg)	Not available for finished compressor
Leak Test Pressure (PSI)	150
(KG/CM ²)	10.6
Shell Integrity Test (PSI)	200
(KG/CM ²)	14.1
UL Shell Integrity (PSI)	1000
(KG/CM ²)	70.4
High Potential Test (Volts)	1500 for One (1) Second
Current Leakage limit (mA)	1.3



AWZ5535EXN

208/230V-60Hz-1Ph

APPLICABLE SAFETY STANDARDS

UL File Number	-
UL Class Number	-
VDE File Number	-
VDE License Number	-

COMPRESSOR ACCESSORIES

Parts Name	Drawing No.	Qty.
Mounting Grommet	AWX – 2025 – 03	1 / Leg
Mounting Sleeve	AWX – 2026 – 04	1 / Leg
Terminal Cover	AWX-2079-02	1
Terminal Cover Gasket	AWX-2078-00	1
Spring Clip (Bale Strap)	70661 – 03	1

COMPRESSOR ACCESSORIES (OPTIONAL)

Parts Name	Part Code / Specifications	Qty.
Run Capacitor (MFD, Volts)	45 MFD, 370 VAC	1
PTC Starting Device (Ohms)	NA	1
Start Capacitor (MFD, Volts)(Optional)	NA	1
Potential Relay (Optional) Pick up Volts (Hot) Drop-Out Volts (Cold)	NA	1
Crank case Heater (TPC / TI) Voltage Limit (Volts) Power Output (Watts)	NA	1



AWZ5535EXN

208/230V-60Hz-1Ph

APPLICABLE DRAWINGS

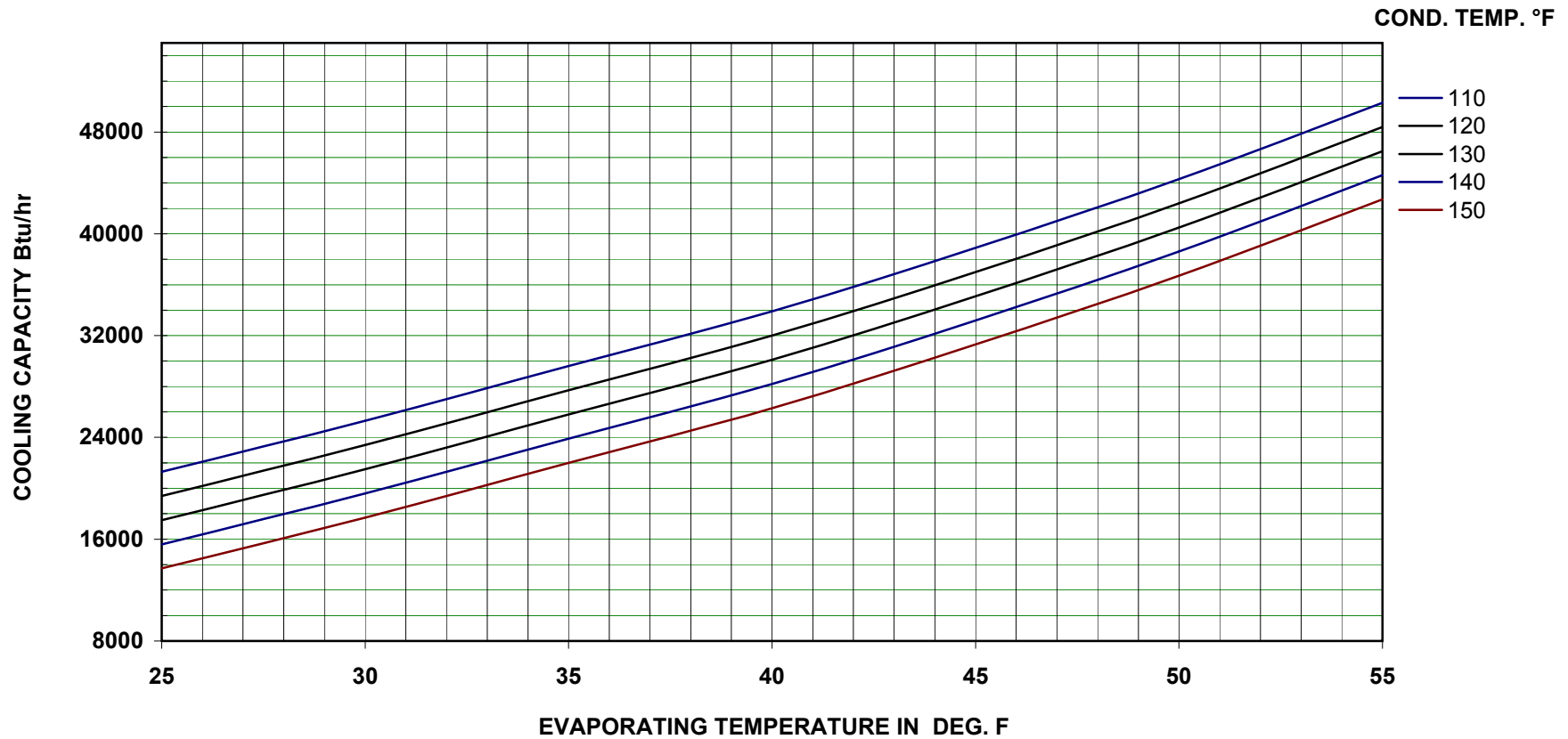
Performance Curves	Cooling Capacity	Enclosed
	Power	Enclosed
	Mass flow	Enclosed
	Current	Enclosed
IOLP curves	--	
Compressor Sales Drawing	4 LEG -STANDARD	AWX-3410-00
	3 LEG - STANDARD	AWX-3411-00
	4 LEG -SHORT	-
	3 LEG - SHORT	-
Wiring diagram PSC / PTCS-CR / CSR / 3-PH	AWX-3383-00	
Serial Label	52597E	
Mounting Grommet	AWX – 2025 – 03	
Mounting Sleeve	AWX – 2026 – 04	
Protective Cover	AWX – 2079 – 02	
Gasket for Protective Cover	AWX – 2078 – 00	
Bale Strap	70661 - 03	



Tecumseh Products India Pvt. Limited - Hyderabad

COOLING CAPACITY CURVE FOR AWZ5535EXN COMPRESSOR

Application : HBP Refrigerent : R-22 Voltage : 208/230V
Frequency : 60 Hz Ambient Temp : 95°F Liquid Sub Cooled : 115°F
Compr.Cooling : 425 CFM Return Gas Temp : 95°F

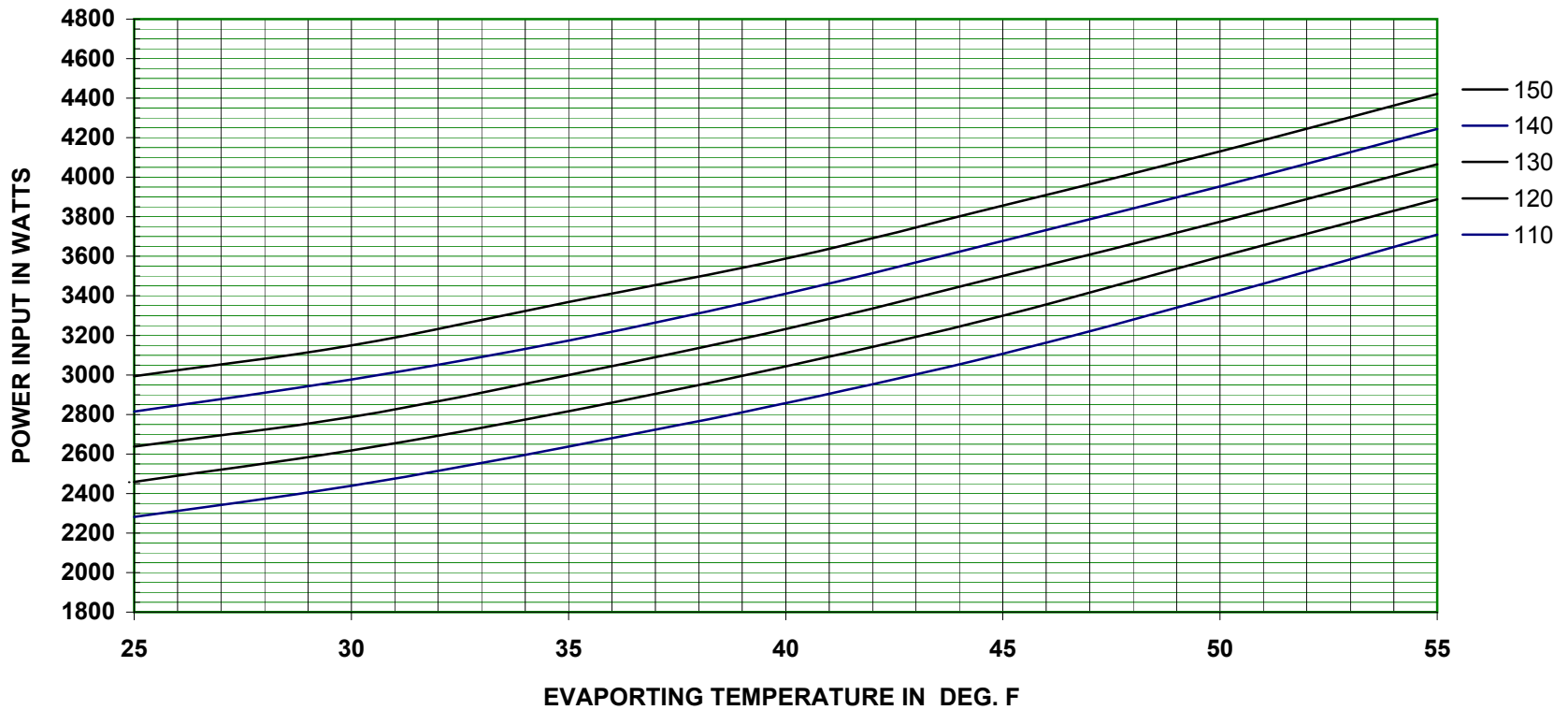




POWER CURVE FOR AWZ5535EXN COMPRESSOR

Application : HBP Refrigerent : R-22 Voltage : 208/230V
Frequency : 60 Hz Ambient Temp : 95°F Liquid Sub Cooled : 115°F
Compr.Cooling : 425 CFM Return Gas Temp : 95°F

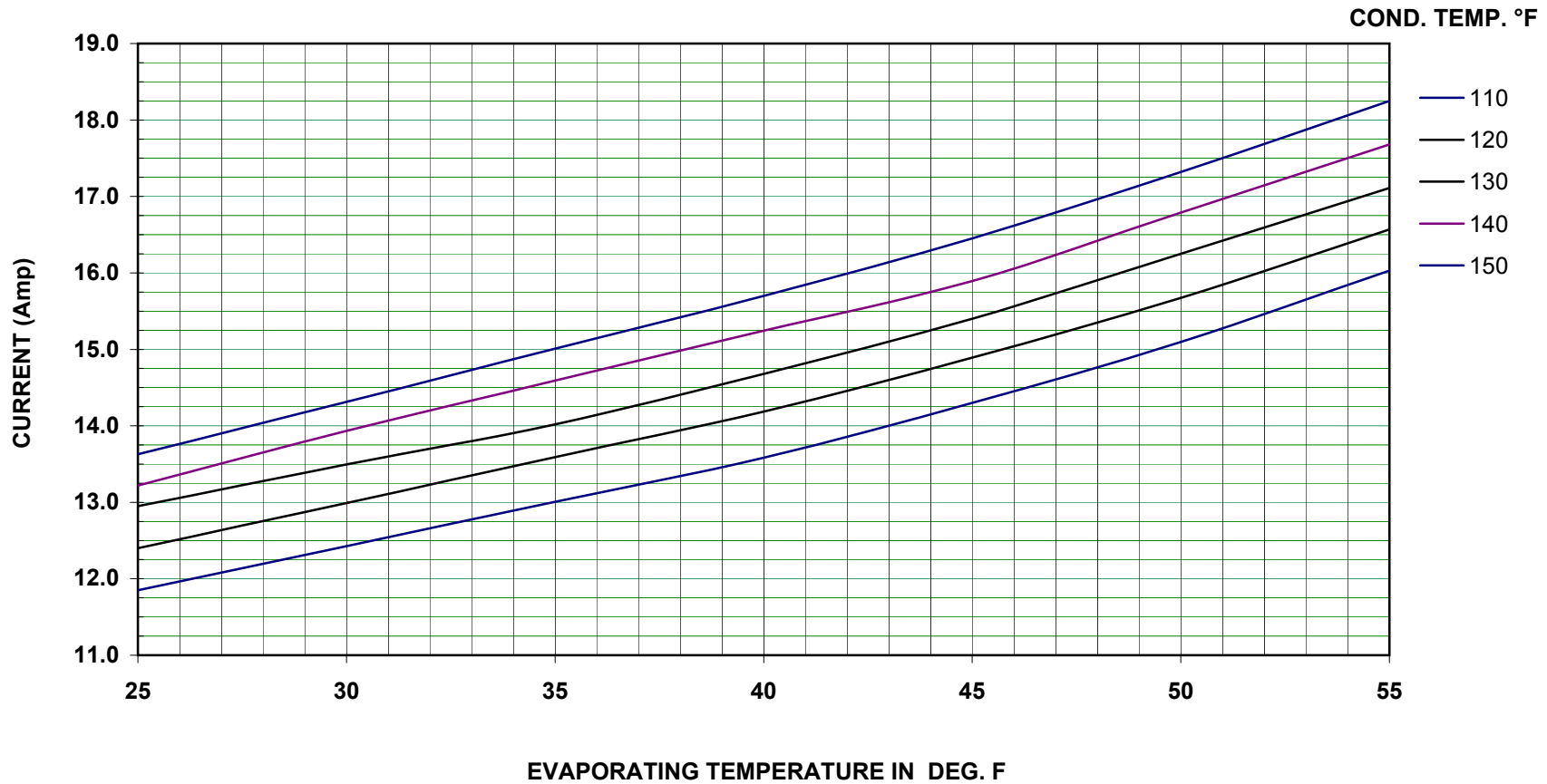
COND. TEMP. °F





CURRENT CURVE FOR AWZ5535EXN COMPRESSOR

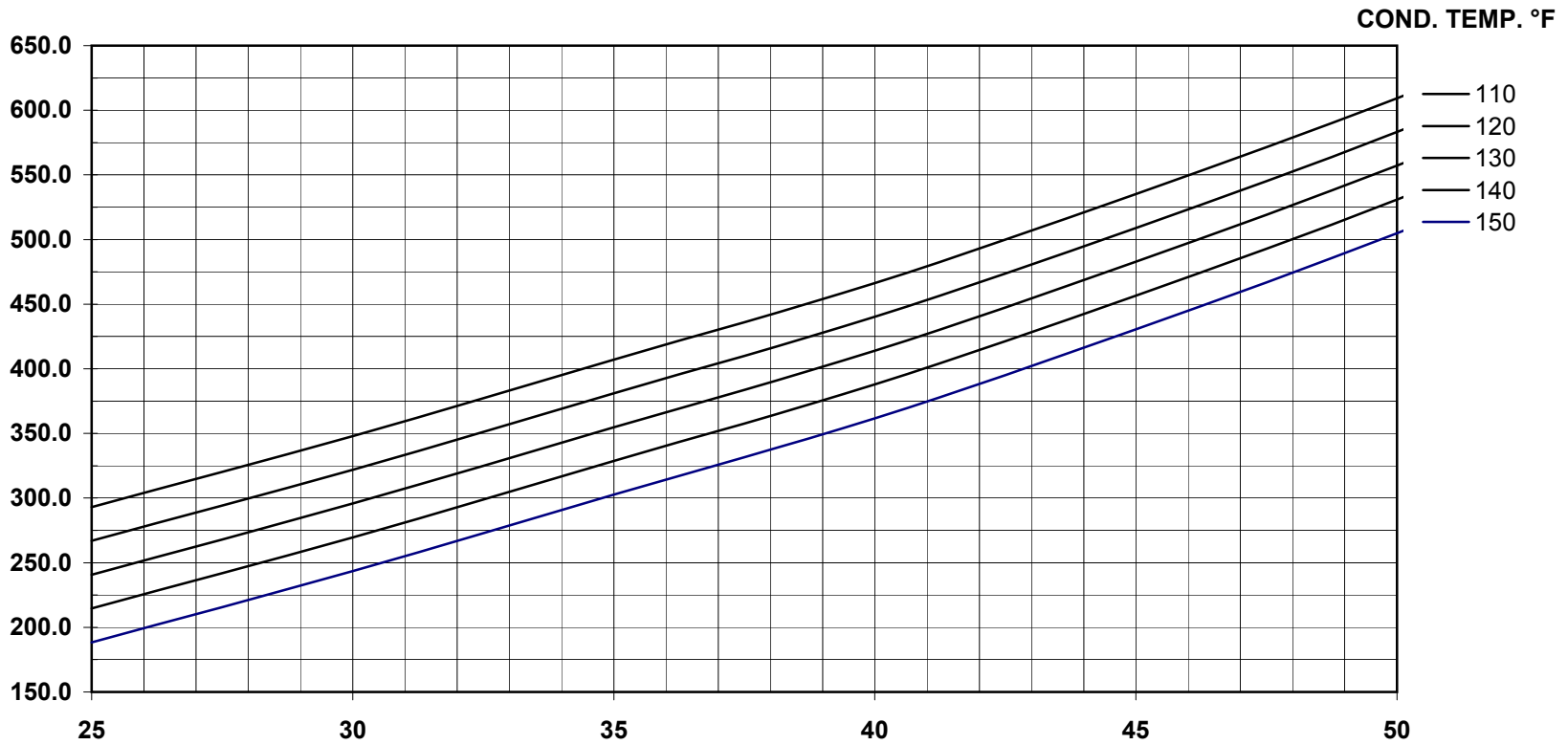
Application : HBP Refrigerent : R-22 Voltage : 208/230V
Frequency : 60 Hz Ambient Temp : 95°F Liquid Sub Cooled : 115°F
Compr.Cooling : 425 CFM Return Gas Temp : 95°F





MASS FLOW CURVE FOR AWZ5535EXN COMPRESSOR

Application	: HBP	Refrigerent	: R-22	Voltage	: 230V
Frequency	: 50 Hz	Ambient Temp	: 95°F	Liquid Sub Cooled	: 115°F
Compr.Cooling	: 425 CFM	Return Gas Temp	: 95°F		

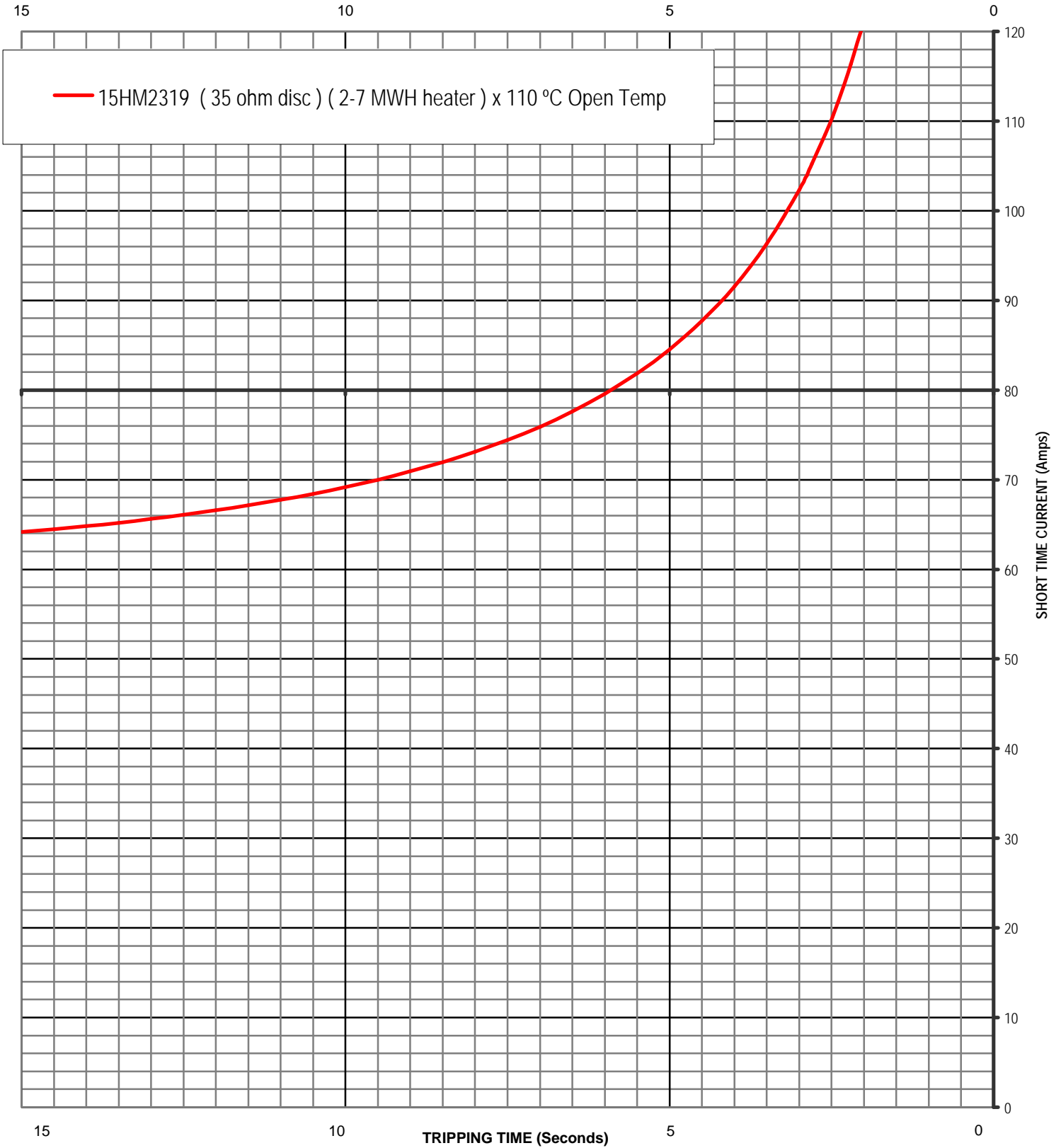


15HM MOTOR PROTECTOR

SHORT TIME CURVES

Average First Cycle Tripping Time VS. Current In 25 °C Ambient (Approximate).
To Be Used Only For Selecting Samples For Motor Verification Test.

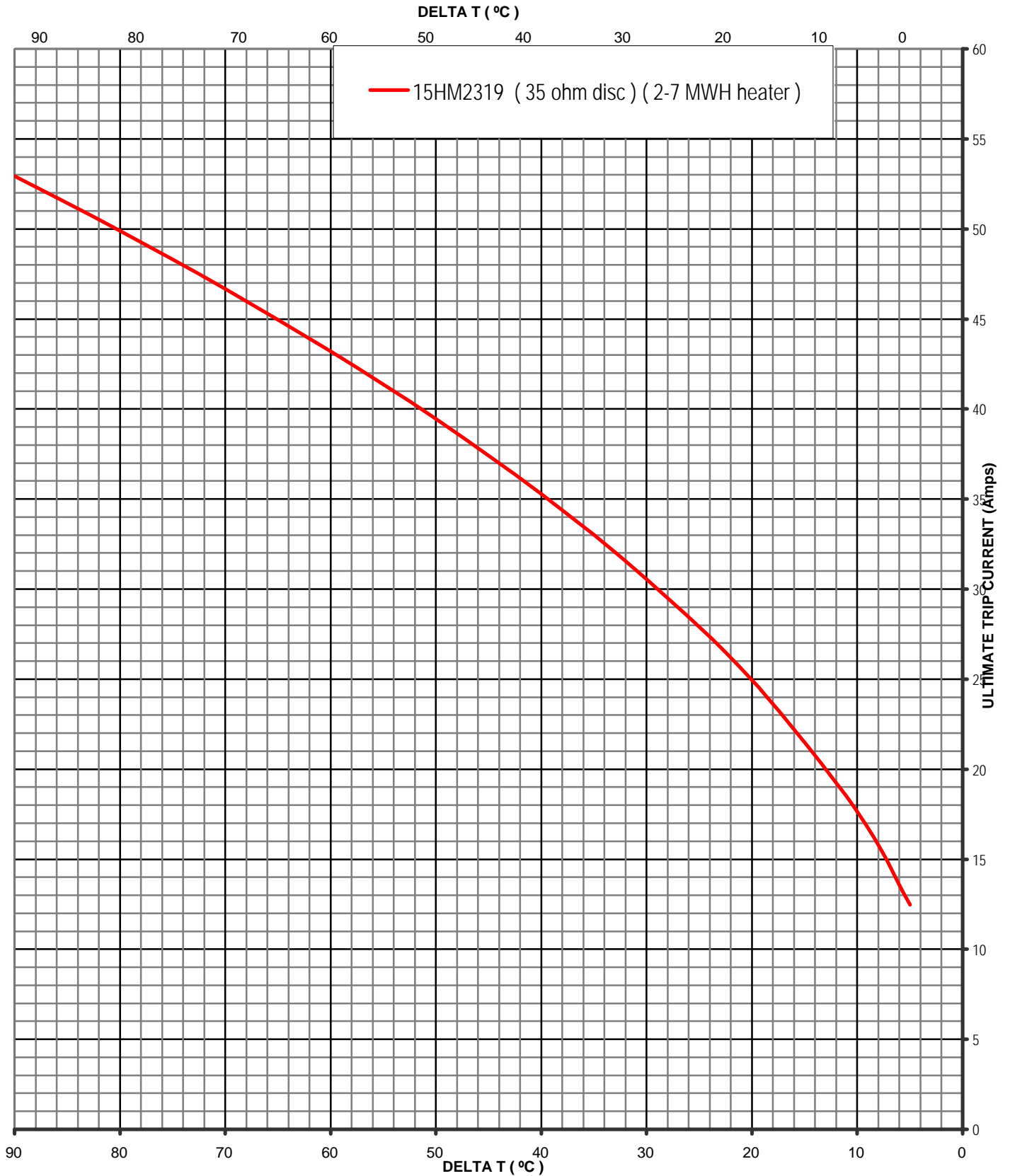
TRIPPING TIME (Seconds)

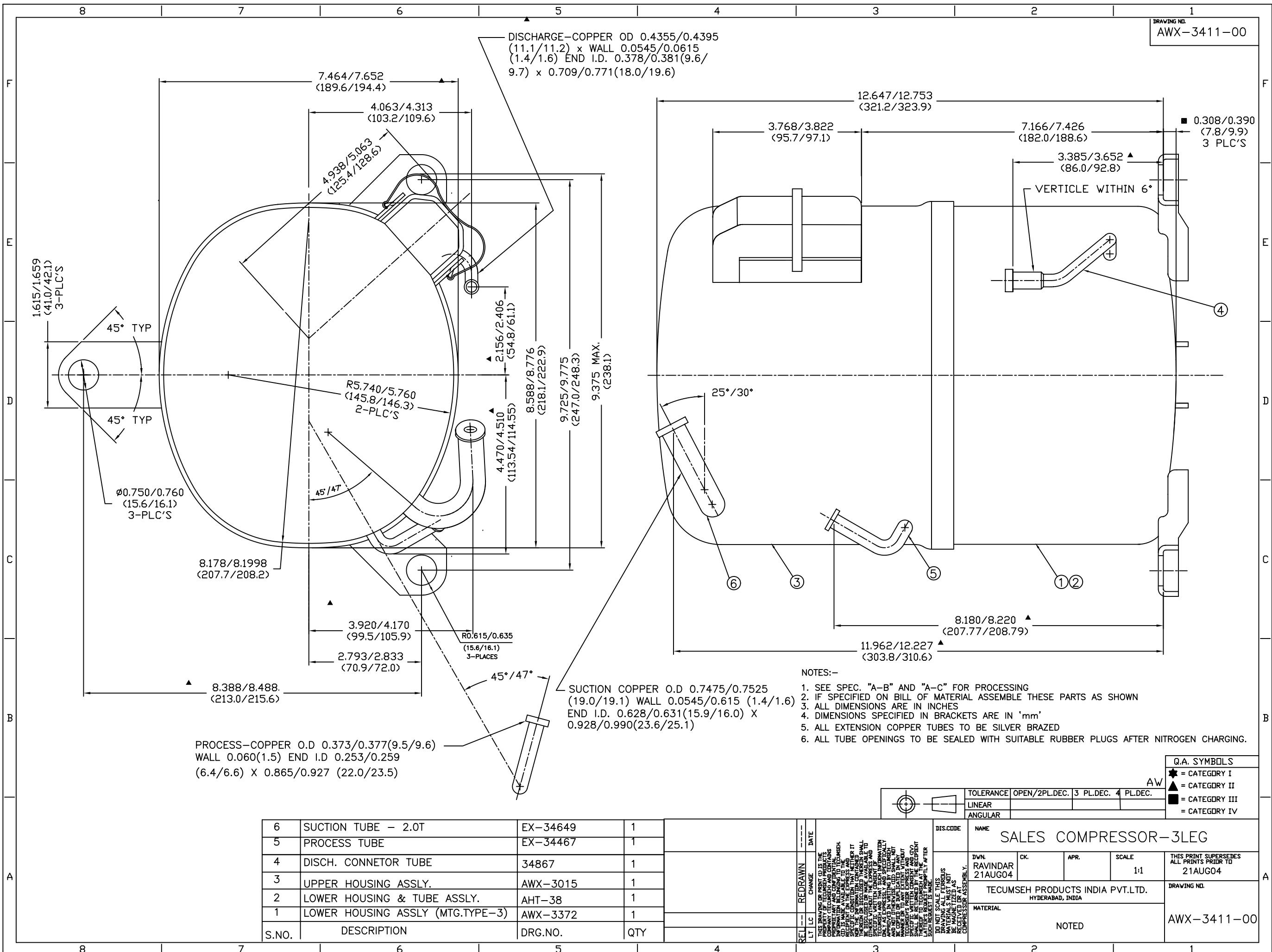


15HM MOTOR PROTECTOR

ULTIMATE TRIP CURVES

Ultimate Trip Current VS. Protector Ambient Temperature (Approximate).
To Be Used Only For Selecting Samples For Motor Verification Test.





DISCHARGE-COPPER OD 0.4355/0.4395
(11.1/11.2) x WALL 0.0545/0.0615
(1.4/1.6) END I.D. 0.378/0.381(9.6/
9.7) x 0.709/0.771(18.0/19.6)

1.615/1.659
(41.0/42.1)
3-PLC'S

∅0.750/0.760
(15.6/16.1)
3-PLC'S

PROCESS-COPPER O.D 0.373/0.377(9.5/9.6)
WALL 0.060(1.5) END I.D 0.253/0.259
(6.4/6.6) x 0.865/0.927 (22.0/23.5)

SUCTION COPPER O.D 0.7475/0.7525
(19.0/19.1) WALL 0.0545/0.615 (1.4/1.6)
END I.D. 0.628/0.631(15.9/16.0) X
0.928/0.990(23.6/25.1)

- NOTES:-
1. SEE SPEC. "A-B" AND "A-C" FOR PROCESSING
 2. IF SPECIFIED ON BILL OF MATERIAL ASSEMBLE THESE PARTS AS SHOWN
 3. ALL DIMENSIONS ARE IN INCHES
 4. DIMENSIONS SPECIFIED IN BRACKETS ARE IN 'mm'
 5. ALL EXTENSION COPPER TUBES TO BE SILVER BRAZED
 6. ALL TUBE OPENINGS TO BE SEALED WITH SUITABLE RUBBER PLUGS AFTER NITROGEN CHARGING.

Q.A. SYMBOLS
 ★ = CATEGORY I
 ▲ = CATEGORY II
 ■ = CATEGORY III
 □ = CATEGORY IV

TOLERANCE	OPEN/2PL.DEC. 3 PL.DEC. 4 PL.DEC.
	LINEAR
ANGULAR	

S.NO.	DESCRIPTION	DRG.NO.	QTY
6	SUCTION TUBE - 2.0T	EX-34649	1
5	PROCESS TUBE	EX-34467	1
4	DISCH. CONNETOR TUBE	34867	1
3	UPPER HOUSING ASSLY.	AWX-3015	1
2	LOWER HOUSING & TUBE ASSLY.	AHT-38	1
1	LOWER HOUSING ASSLY (MTG.TYPE-3)	AWX-3372	1

REVISION	DATE	BY	CHKD	APPR	SCALE
---	---	---	---	---	---

DIS.CODE NAME SALES COMPRESSOR-3LEG

DWN. RAVINDAR 21AUG04 CK. APR. SCALE 1:1

TECUMSEH PRODUCTS INDIA PVT.LTD. HYDERABAD, INDIA

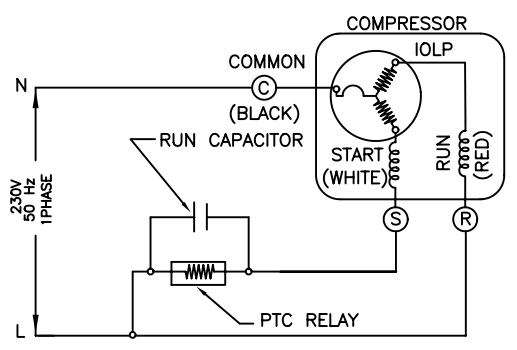
MATERIAL NOTED

THIS PRINT SUPERSEDES ALL PRINTS PRIOR TO 21AUG04

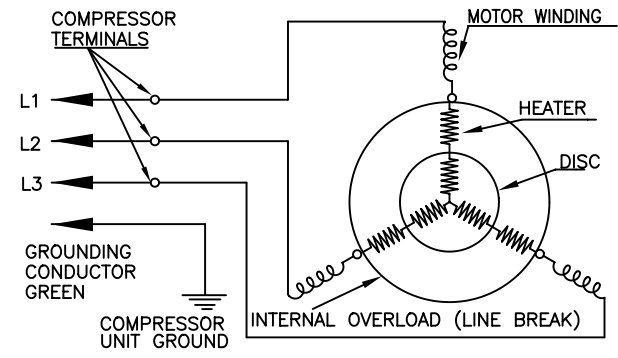
DRAWING NO. AWX-3411-00

DRAWING NO.
AWX-3383-00

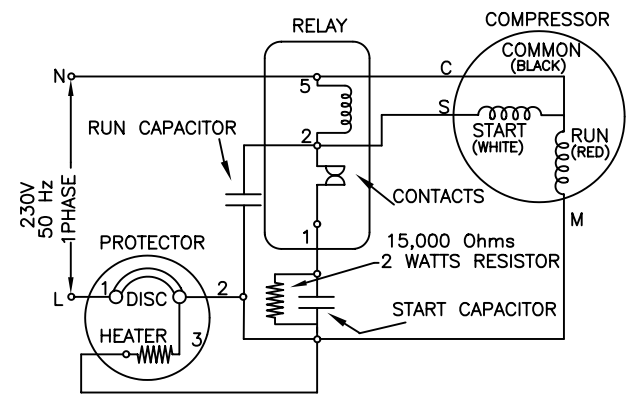
WIRING DIAGRAM - PTCS-CR CIRCUIT



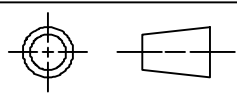
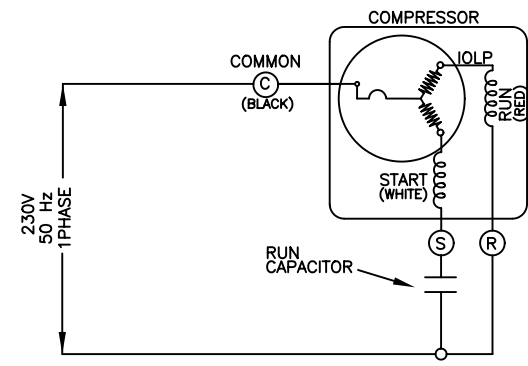
WIRING DIAGRAM - 3 PH



WIRING DIAGRAM - CSR CIRCUIT



WIRING DIAGRAM - PSC CIRCUIT



TOLERANCE	OPEN	3 PL. DEC	4 PL. DEC
LINEAR	---		
ANGULAR			

Q.A. SYMBOLS

- ★ = CATEGORY I
- ▲ = CATEGORY II
- = CATEGORY III
- = CATEGORY IV

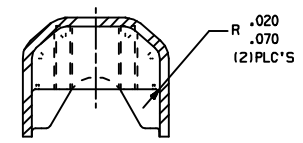
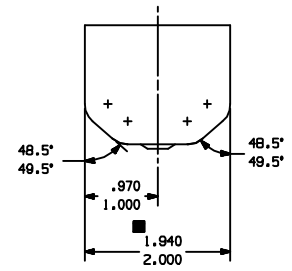
LT	LC	CHANGE	DATE

THIS DRAWING OR PRINT IS THE PROPERTY OF TECUMSEH PRODUCTS INDIA LTD. (TECUMSEH) AND CONTAINS PROPRIETARY AND CONFIDENTIAL INFORMATION BELONGING TO TECUMSEH. IT IS MADE AVAILABLE TO THE RECIPIENT UNDER THE FOLLOWING SPECIFIC CONDITION: THAT NEITHER IT NOR THE INFORMATION CONTAINED THEREIN OR DISCLOSED THEREIN SHALL BE DISCLOSED OR MADE AVAILABLE TO ANY OTHER PERSON, FIRM, BUSINESS AND/OR ORGANIZATION WITHOUT THE WRITTEN CONSENT OF TECUMSEH. PRIOR EXPRESS AND SPECIFIC WRITTEN CONSENT AND (IV) THIS INFORMATION IS TO BE RETURNED TO TECUMSEH AS SOON AS POSSIBLE AFTER SUCH REQUEST IS MADE.

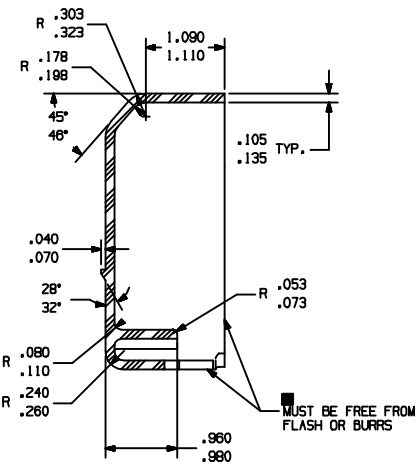
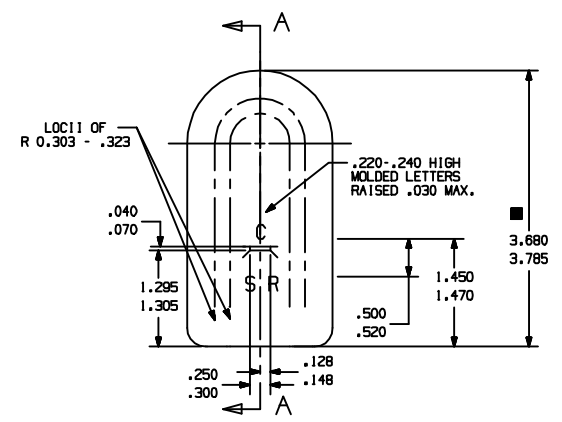
DIS.CODE	NAME				ELECTRICAL WIRING DIAGRAM	
	DWN.	CK.	APR.	SCALE	THIS PRINT SUPERSEDES ALL PRINTS PRIOR TO	
	SEKHAR	G.N.R		NTS		
	09SEP04				DRAWING NO.	
	MATERIAL				AWX-3383-00	
	TECUMSEH PRODUCTS INDIA LTD.					
	HYDERABAD, INDIA					

NOTES:

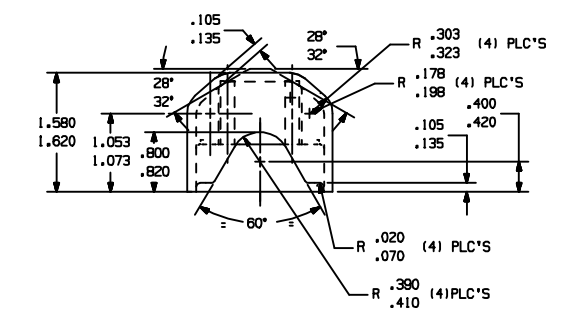
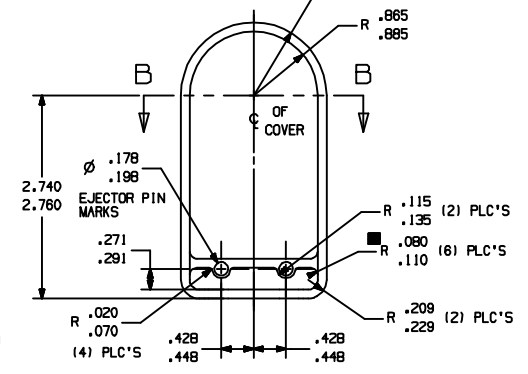
1. SEE T.P.CO. SPEC. #H-101.
2. COLOR - BLACK.
3. MATERIAL - PLASTIGAGE CORP. FIBER GLASS REINFORCED POLYESTER (BLACK COMPOUND) U.L. RECOGNIZED HETHER LITE 802-5574.
4. ALT. MATL. - AMERICAN CYANAMID CO. GLASS REINFORCED ALKYD MOLDING (BLACK) COMPOUND U.L. RECOGNIZED COMPOUND "GLASKYD", 3001G OR INDUSTRIAL DIELECTRICS MAT'L. DESIGNATION P. 5003 FR (MOLDER GREAT LAKES PLASTICS INC.)
5. ALT. MATERIAL : DEV1 POLYMERS DOUGH MOLDING COMPOUND U.L. RECOGNIZED "FLDODMAT" #5585/30
6. ALT. MATERIALS : NORYL PX8406N (GE) -UL APPROVED
7. VENDOR MUST SHOW MATL. DESIGNATION ON OUTSIDE OF SHIPPING CONTAINER.
8. VENDOR SHOULD UNDERGO UL'S MOLDER PROGRAM FOR PLASTICS



SECTION B - B



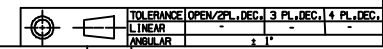
SECTION A - A



3D, UG-NX

Q.A. SYMBOLS

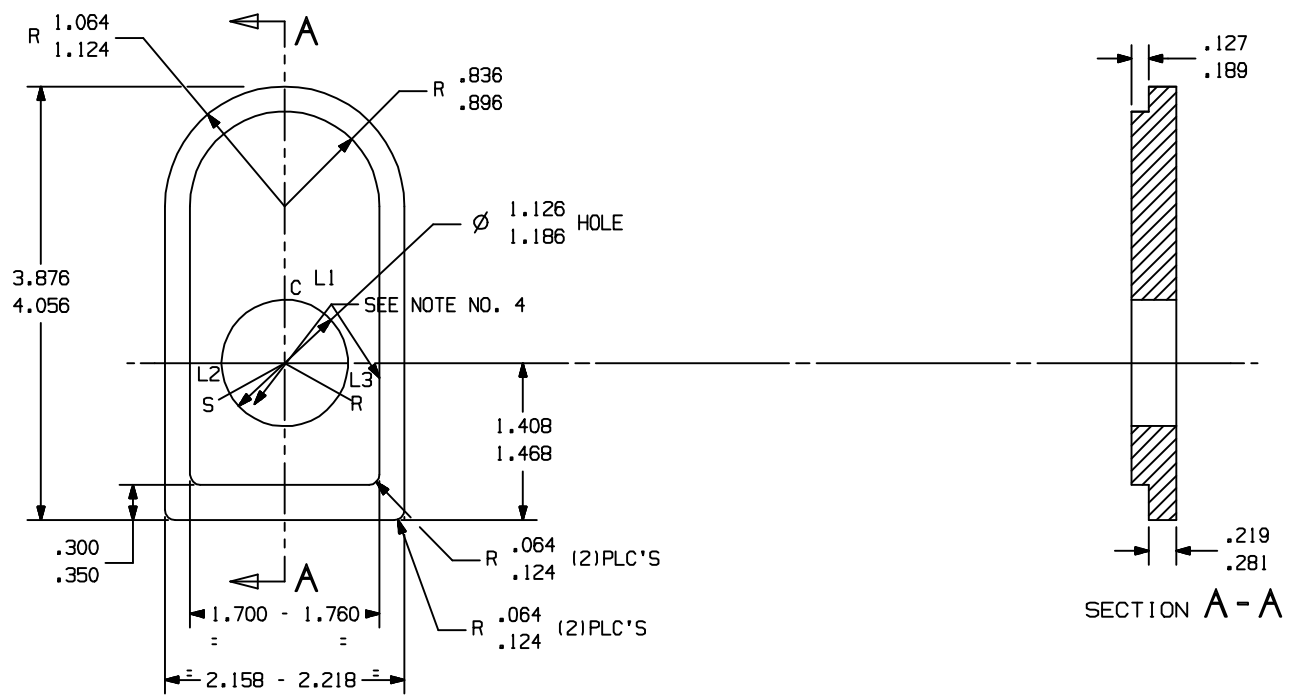
- AW = CATEGORY I
- ▲ = CATEGORY II
- = CATEGORY III
- = CATEGORY IV



REV.	DATE	BY	CHKD.	DESCRIPTION
1	02/08/03	SPM	AW	INITIALS
2				
3				
4				
5				

DIS. CODE	NAME	PROTECTIVE COVER		
DWL	SPMANI	OK.	APPL.	SCALE
02AUG03	ON FILE	ON FILE	1:1	ALL PRINTS SUPERSEDED
TECUMSEH PRODUCTS INDIA PVT.LTD.				DRAWING NO.
HYDERABAD, INDIA				AWX-2079-02
MATERIAL				SEE NOTES

DRAWING NO.
AWX-2078-00



NOTES:

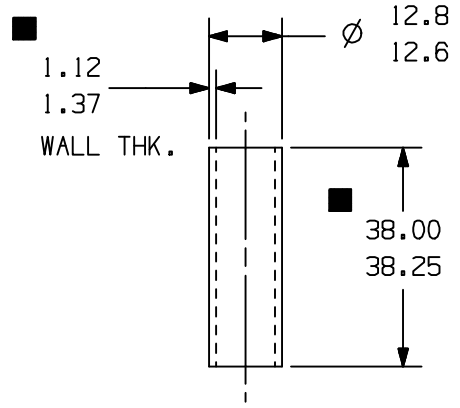
1. SEE T.P.Co. SPEC. NO. E-75 FOR STORAGE
2. VENDOR MUST SHOW MATERIAL DESIGNATION ON, OUTSIDE OF SHIPPING CONTAINER
3. MATERIAL- RUBATEX R425 N (OR) NEOPRENE
 ALT. MATERIAL : AMERICAN NATIONAL RUBBER CO. -4219 N
 ALT. MATERIAL -UNIROYAL INSOLITE TYPE IV2
4. 3/16 HIGH LETTER AS SHOWN 3-PLACES USING DERUSTO MAINUTE
 FINISH HIGLOSS SPEED FINISH D-25 ALUMINUM
5. MATERIAL DENSITY = 30 TO 40 PCF

Q.A. SYMBOLS			
★	=	CATEGORY I	
▲	=	CATEGORY II	
■	=	CATEGORY III	
□	=	CATEGORY IV	

TOLERANCE	OPEN/2PL.DEC.	3 PL.DEC.	4 PL.DEC.
LINEAR	-	-	-
ANGULAR	± 1°		

REVISION IN UNIFORMITY	DATE	DESCRIPTION	NAME				
LT/LC			GASKET FOR PROTECTIVE COVER				
			DWN.	CK.	APR.	SCALE	THIS PRINT SUPERSEDES ALL PRINTS PRIOR TO
			SPMANI 11 JUN 03	ON FILE	ON FILE	1:1	
			TECUMSEH PRODUCTS INDIA PVT.LTD. HYDERABAD, INDIA				DRAWING NO.
			MATERIAL				AWX-2078-00
			REFER NOTES				

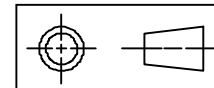
DRAWING NO.
AWX-2026-04



NOTES:

1. TO BE FREE FROM RUST & BURRS.
2. TREATMENT: ZINC PASSIVATED 0.005 MM MIN.
3. I.D. MUST ACCEPT A \varnothing 9.68 GAUGE PIN.
4. ALL DIMENSIONS ARE IN MM.

Q.A. SYMBOLS	
★	= CATEGORY I
▲	= CATEGORY II
■	= CATEGORY III
□	= CATEGORY IV



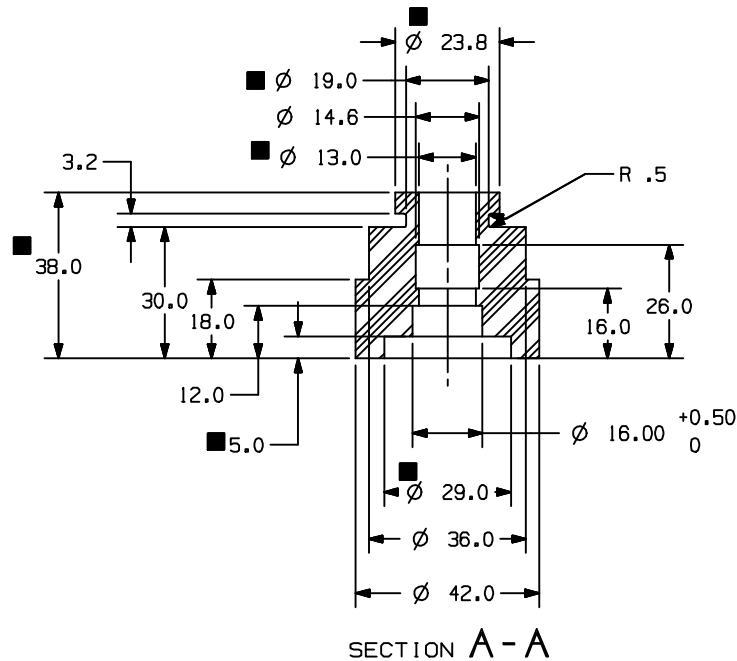
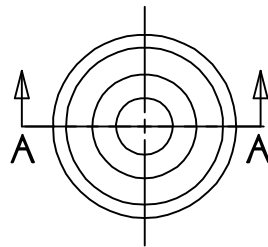
TOLERANCE	OPEN/2PL.DEC.	3 PL.DEC.	4 PL.DEC.
LINEAR	-	-	-
ANGULAR	± 1°		

LT	LC	CHANGE	DATE	DIS.CODE	NAME				DRAWING NO.
				--	GROMMET SLEEVE				
					DWN.	CK.	APR.	SCALE	THIS PRINT SUPERSEDES ALL PRINTS PRIOR TO
					VENU 10APRO2	ONFILE	--	1:1	
					TECUMSEH PRODUCTS INDIA PVT.LTD. HYDERABAD, INDIA				MATERIAL WELDED STEEL TUBE CEW AS PER IS: 3074

THIS DRAWING OR PRINT (L1) IS THE PROPERTY OF TECUMSEH PRODUCTS COMPANY AND CONTAINS INFORMATION BELONGING TO TECUMSEH. (L1) IS MADE AVAILABLE TO THE SPECIFIC CONDITION THAT NEITHER IT NOR THE INFORMATION CONTAINED THEREIN SHOULD BE USED IN ANY MANNER WITHOUT THE EXPRESS AND WRITTEN CONSENT OF TECUMSEH. ONLY AS EXPRESSLY AND SPECIFICALLY APPROVED IN WRITING BY TECUMSEH AND NOT BE REPRODUCED IN ANY MANNER OR TO ANY EXTENT WITHOUT TECUMSEH'S PRIOR EXPRESS AND WRITTEN CONSENT. THE RECIPIENT SHALL BE RETURNED BY THE RECIPIENT THEREOF TO TECUMSEH AT THE ADDRESS MENTIONED PROMPTLY AFTER SUCH AS REQUEST IS MADE.

DO NOT SCALE THIS DRAWING. MATERIALS MUST NOT BE MAGNETIZED AS RECEIVED OR AT COMPRESSOR ASSEMBLY.

DRAWING NO.
AWX-2025-03



MATERIAL : 50% SBR + 50% NATURAL RUBBER
CLASS & TYPE AA AS PER H-110

PROPERTIES:

1. HARDNESS : 37 DHN ± 3
2. TENSILE STRENGTH : 1015 PSI MIN.
3. ELONGATION : 400% MIN.
4. AFTER AGING AT 70° C FOR 70 HRS
 - a) HARDNESS: ± 15
 - b) TENSILE STRENGTH: $\pm 30\%$
 - c) ELONGATION: - 50% MAX
- ▲ 6. COLOUR : BLACK
- ▲ 7. SPECIFIC GRAVITY 1.2 \pm 0.1

NOTES:

1. TO BE FREE FROM FLASH
2. ALL DIMENSIONS ARE IN MM

SECTION A - A

Q.A. SYMBOLS	
★	= CATEGORY I
▲	= CATEGORY II
■	= CATEGORY III
□	= CATEGORY IV

TOLERANCE	AW		
	OPEN/2PL.DEC.	3 PL.DEC.	4 PL.DEC.
LINEAR	± 0.010	-	-
ANGULAR	$\pm 1^\circ$	-	-

REVISIONS NO. DATE BY	DATE	DIS. CODE				NAME GROMMET
	CHANGE	DWN.	CK.	APR.	SCALE	
	UNGRAPHIC	12APR02	--	--	1:1	
	LT	MATERIAL REF. ABOVE				
<p>THIS DRAWING OR PRINT (1) IS THE PROPERTY OF TECUMSEH PRODUCTS INDIA LTD. AND CONTAINS INFORMATION RELATING TO DESIGN, REVISIONS, AND MANUFACTURE. IT IS TO BE KEPT IN STRICTLY CONFIDENTIAL AND NOT TO BE REPRODUCED OR COPIED IN ANY MANNER WITHOUT THE WRITTEN PERMISSION OF TECUMSEH PRODUCTS INDIA LTD. ANY INFORMATION CONTAINED HEREIN SHALL BE DECLASSIFIED ONLY AS AUTHORIZED BY TECUMSEH PRODUCTS INDIA LTD. AFTER THE EXPIRY OF THE PERIOD SPECIFIED IN THE DRAWING. THIS DRAWING IS TO BE KEPT IN THE ORIGINAL FILE AND NOT TO BE REPRODUCED OR COPIED IN ANY MANNER WITHOUT THE WRITTEN PERMISSION OF TECUMSEH PRODUCTS INDIA LTD. ANY INFORMATION CONTAINED HEREIN SHALL BE DECLASSIFIED ONLY AS AUTHORIZED BY TECUMSEH PRODUCTS INDIA LTD. AFTER THE EXPIRY OF THE PERIOD SPECIFIED IN THE DRAWING.</p>						
<p>DO NOT SCALE THIS DRAWING. DIMENSIONS MUST NOT BE MAGNIFIED AS SHOWN. MATERIALS MUST NOT BE USED UNLESS SPECIFICALLY IDENTIFIED IN THIS DRAWING. MATERIALS MUST NOT BE USED UNLESS SPECIFICALLY IDENTIFIED IN THIS DRAWING.</p>						
<p>TECUMSEH PRODUCTS INDIA LTD. HYDERABAD, INDIA</p>						
<p>DRAWING NO. AWX-2025-03</p>						

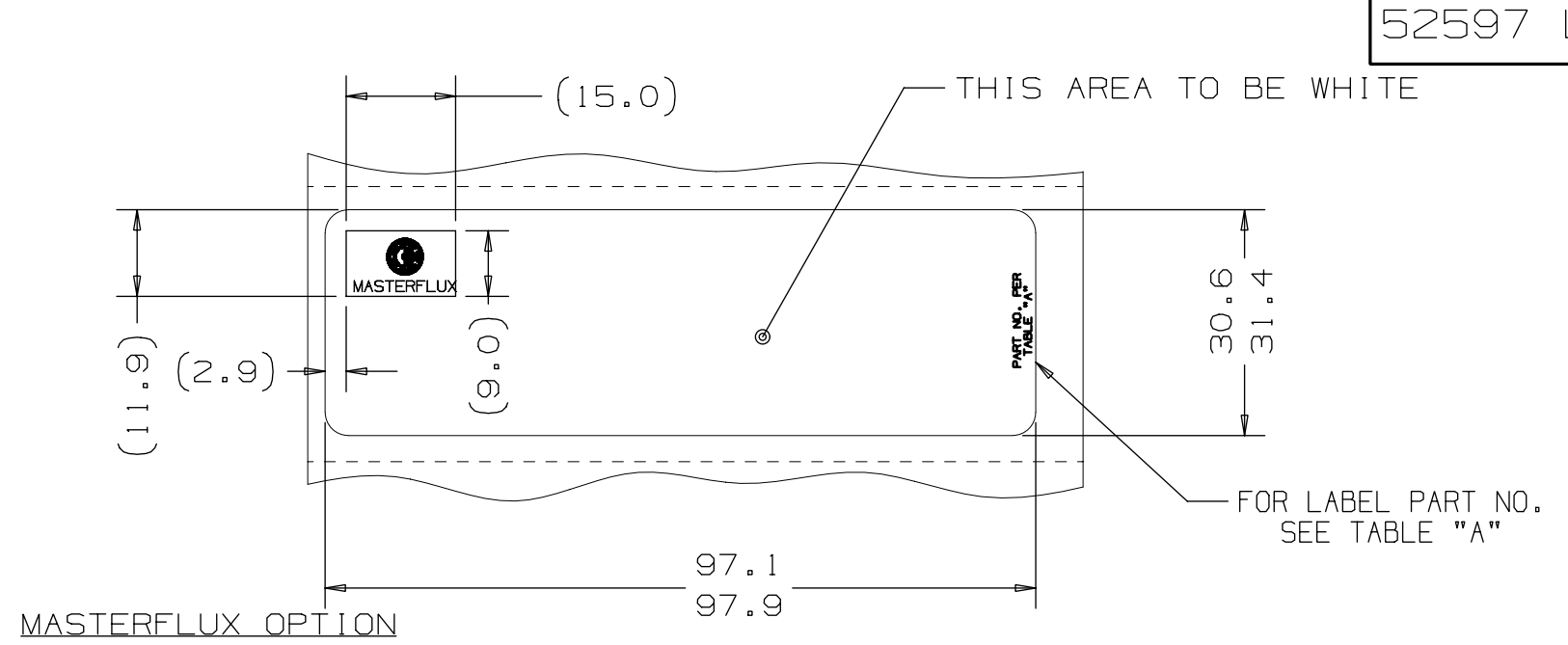
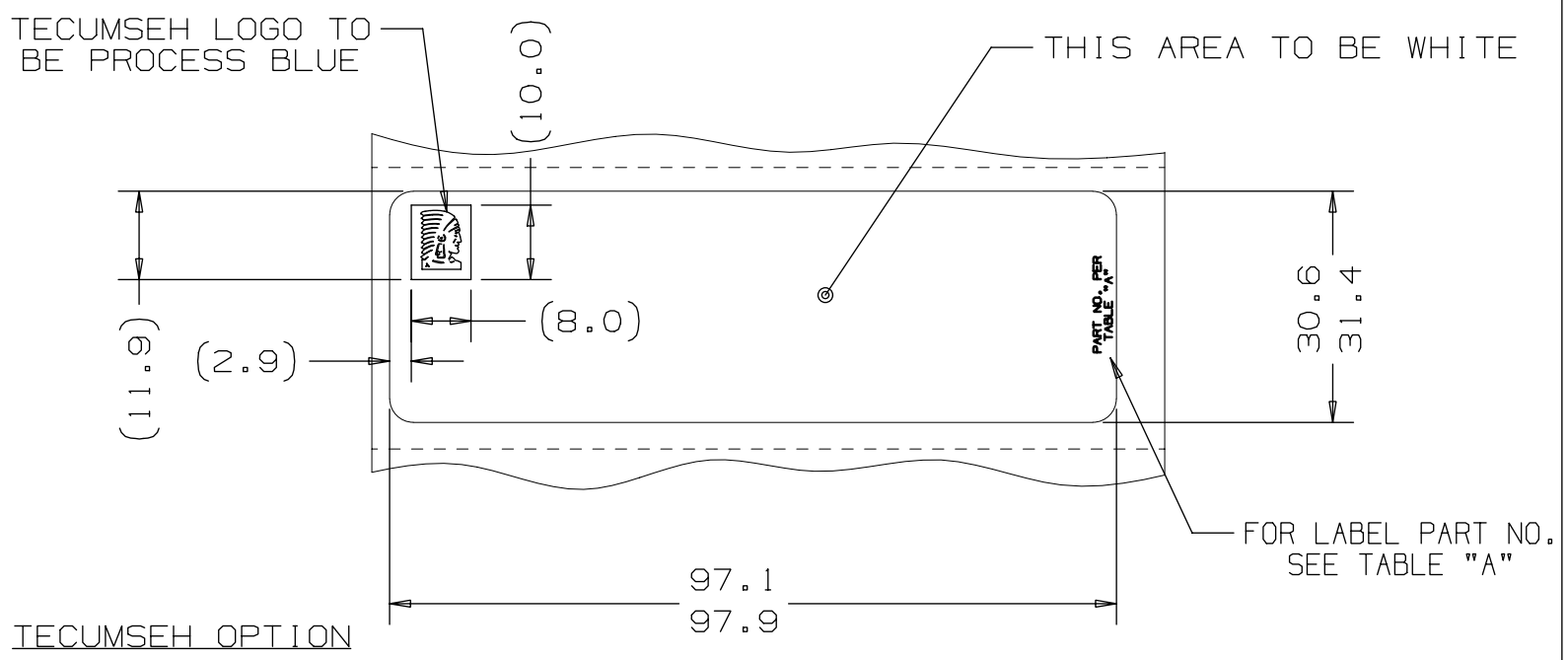
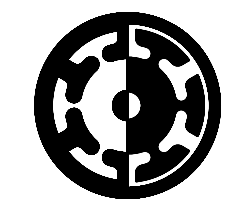


TABLE "A"

MFG LOCATION	PART NO.	LABEL MATERIAL	LOGO DWG. No.
USA/TdB	52597B	THERMLFILM PM200W - TC - 387 WITH L-23 ADHESIVE - 103mm WIDE - 40# SILICON.	MD893
TEC EUROPE	52597D	POLYESTER 7813 SILVER WITH 300 ADHESIVE MADE BY 3M AND THERMLFILM MM300 SATIN SILVER TC-712 WITH V-660 ADHESIVE MADE BY FLEXCON	MD893
TEC INDIA	52597E	3M 7385 TAMPER-INDICATING WITH #320 "HIGH TENACITY" ACRYLIC ADHESIVE - OR THERMLFILM PM200W - TC - 387 WITH L-23 ADHESIVE - 103mm WIDE - 40# SILICON.	MD893
MASTERFLUX	52547F	THERMLFILM PM200W - TC - 387 WITH L-23 ADHESIVE - 103mm WIDE - 40# SILICON.	MD892



TECUMSEH LOGO
SCALE 5:1
REF. DRAWING #MD893



MASTERFLUX

MASTERFLUX LOGO
SCALE 5:1
REF. DRAWING #MD892

- NOTES--
- PART MUST BE APPROVED PER T.P. Co. GLOBAL SPEC. #07.
 - FOR LABEL MATERIAL, PRINTER, PRINTER RIBBONS SEE TABLE "A"
 - PACKAGING TO BE MARKED WITH T.P.Co. PART NUMBER, 76.2mm I.D. x 82.6mm O.D.
 - DIECUT LABELS WOUND ON CORES OF 76.2mm I.D. x 82.6mm O.D.
 - FOR LOGO STYLE, FONT, AND COLORS SEE TABLE "A".

METRIC	
Q.A. SYMBOLS	
☆	= CATEGORY I
△	= CATEGORY II
□	= CATEGORY III
○	= CATEGORY IV

ALL

		REEVES 20AUG03		REEVES 20AUG03		REEVES 06AUG03		A.J.L. 23JUL03		DTD 21JUL03		DATE		DIS.CODE		NAME	
		#241521-030 DWG.# MD893 WAS MC893		ADDED REFERENCE NOTE TO LOGOS		#241521-026 ADDED ALT. MATERIAL FOR 52597E		#241521-015 ADDED 52597F		#241521-023 ADDED 52597E		#241521-020 ADDED TEC. LOGO VIEW ADDED LOC. DIMENSIONS		REL #241521-013		COMPRESSOR SERIAL LABEL	
		3B		2C		3B		6A		5B		A		REL		DWN. DTD 12JUN03	
																CK. ON FILE	
																APR. ON FILE	
																SCALE 1=1	
																THIS PRINT SUPERSEDES ALL PRINTS PRIOR TO	
																DRAWING NO. 52597 LTR	
																MATERIAL NOTED	
																DRAWING No. MD888-07	
																REVISION LEVEL: REL	

